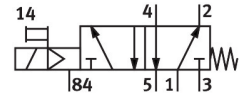
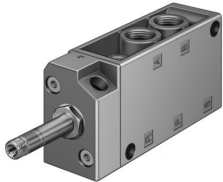


Solenoid valve MFH-5-1/4

Part number: 6211

FESTO



 [General operating condition](#)

Data sheet

Feature	Value
Valve function	5/2-way, monostable
Type of actuation	Electric
Construction width	30.5 mm
Standard nominal flow rate (standardised to DIN 1343)	1000 l/min
pneumatic working port	G1/4
Operating voltage	Via solenoid coil, must be ordered separately
Operating pressure	0.22 MPa ... 0.8 MPa
Operating pressure	2.2 bar ... 8 bar
Design	Poppet seat
Type of reset	Mechanical spring
Approval	c UL us - Recognized (OL)
Degree of protection	IP65
Nominal size	7 mm
Grid dimension	32 mm
Exhaust-air function	With flow control option
Sealing principle	Soft
Mounting position	optional
Manual override	Detenting
Type of piloting	Pilot actuated
Flow direction	Non-reversible
Symbol	00991035
lap	Underlap
b value	0.19
C value	4.49 l/sbar
Switching time off	29 ms
Switching time on	9 ms
Max. positive test pulse with 0 signal	2200 µs
Max. negative test pulse with 1 signal	3700 µs
Characteristic coil data	See solenoid coil, to be ordered separately
Operating medium	Compressed air to ISO 8573-1:2010 [7:4:4]
Note on operating and pilot medium	Lubricated operation possible (in which case lubricated operation will always be required)
Corrosion resistance class CRC	1 - Low corrosion stress
LABS (PWIS) conformity	VDMA24364-B1/B2-L
Storage temperature	-20 °C ... 60 °C
Media temperature	-10 °C ... 60 °C

Feature	Value
Ambient temperature	-5 °C ... 40 °C
Product weight	290 g
Electrical connection	Via F coil, to be ordered separately
Type of mounting	Either: On manifold rail With through-hole
Pilot exhaust port 84	M5
Pneumatic connection, port 1	G1/4
Pneumatic connection, port 2	G1/4
Pneumatic connection, port 3	G1/4
Pneumatic connection, port 4	G1/4
Pneumatic connection, port 5	G1/4
Note on materials	RoHS-compliant
Material seals	NBR
Material housing	Die-cast aluminium